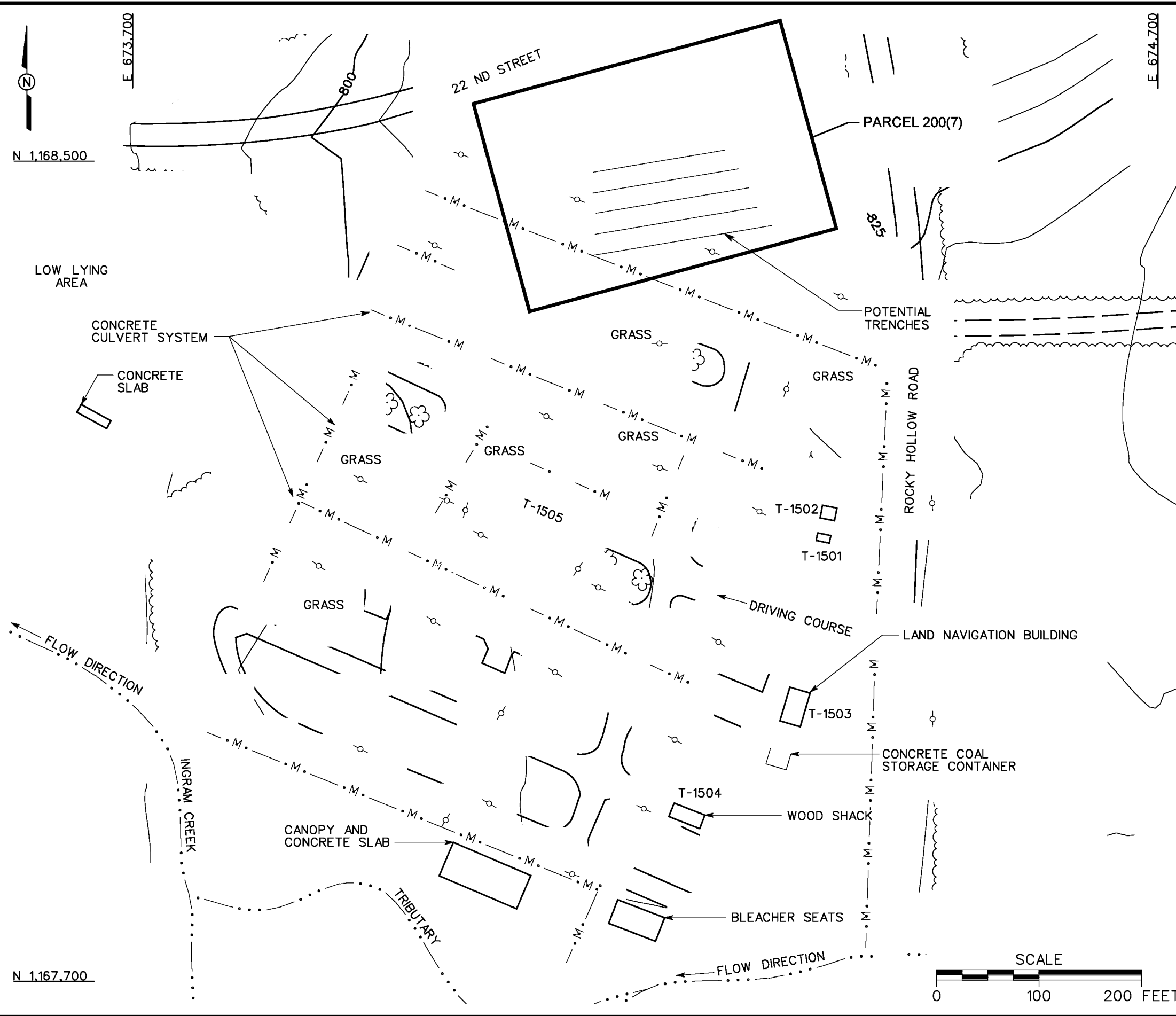


DBILLING  
c:\cadd\design\774645es.568  
03/27/01 10:30:23 AM  
STARTING DATE: 7/21/00  
DRAWN BY: D. BILLINGSLEY  
DATE LAST REV.:  
DRAWN BY:  
ENGR. CHK. BY: S. MORAN  
DRAFT. CHK. BY:  
INITIATOR: D. LAMB  
PROJ. MGR.: J. YACOB  
PROJ. NO.: 774645  
DWG. NO.: 774645es.568



- LEGEND**
- UNIMPROVED ROADS AND PARKING
  - PAVED ROADS AND PARKING
  - BUILDING
  - TOPOGRAPHIC CONTOURS (CONTOUR INTERVAL - 5 FOOT)
  - TREES / TREELINE
  - PARCEL BOUNDARY
  - UTILITY POLE
  - BRIDGE
  - CULVERT WITH HEADWALL
  - SURFACE DRAINAGE / CREEK
  - MANMADE SURFACE DRAINAGE FEATURE

**FIGURE 1-2**  
**SITE MAP**  
**GROUND SCAR WITH TRENCHES**  
**AT DRIVING COURSE**  
**PARCEL 200(7)**

U. S. ARMY CORPS OF ENGINEERS  
MOBILE DISTRICT  
FORT McCLELLAN  
CALHOUN COUNTY, ALABAMA  
Contract No. DACA21-96-D-0018

